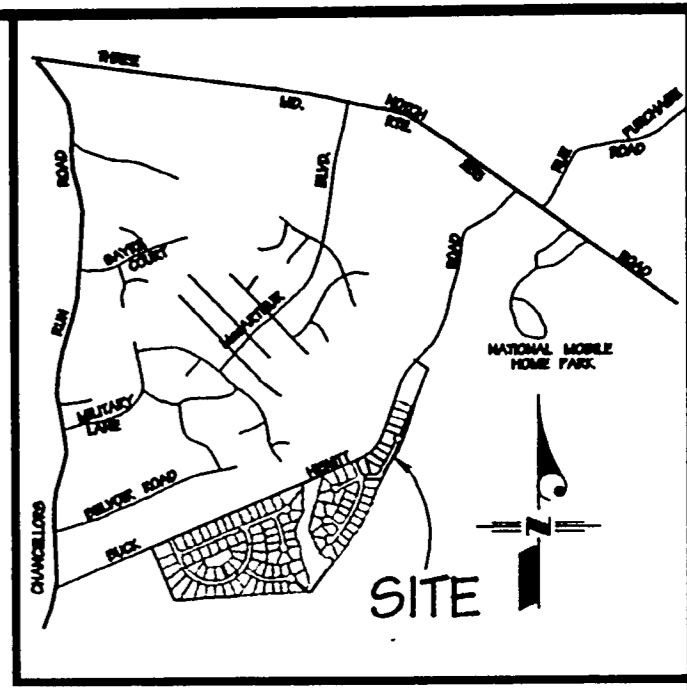
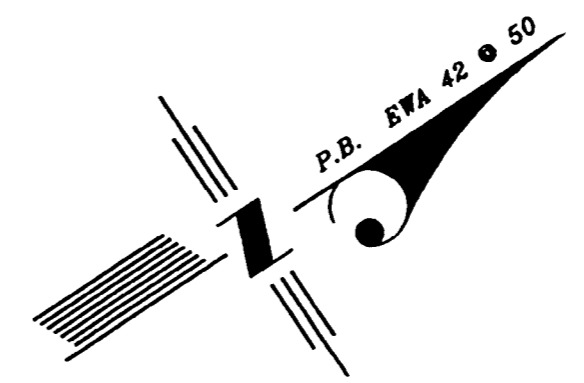
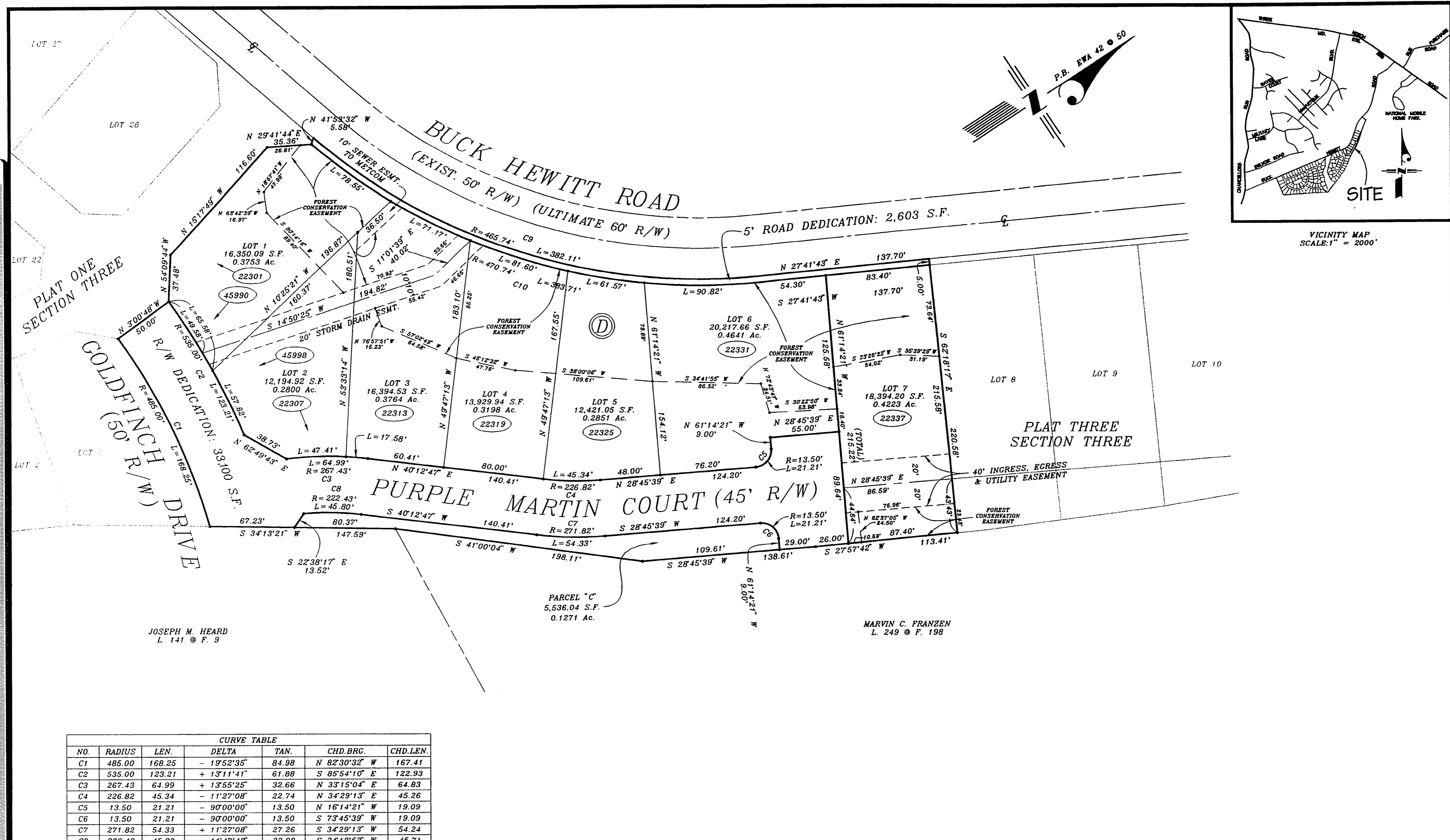


MARYLAND STATE ARCHIVES



NO.	RADIUS	LEN.	DELTA	TAN.	CHD.BRG.	CHD.LEN.
C1	485.00	168.25	- 19°52'35"	84.98	N 82°30'32" W	167.41
C2	535.00	123.21	+ 13°11'41"	61.88	S 85°54'10" E	122.93
C3	267.43	64.99	+ 13°55'25"	32.66	N 33°15'04" E	64.83
C4	226.82	45.34	- 11°27'08"	22.74	N 34°29'13" E	45.26
C5	13.50	21.21	- 90°00'00"	13.50	N 16°14'21" W	19.09
C6	13.50	21.21	- 90°00'00"	13.50	S 73°45'39" W	19.09
C7	271.82	54.33	+ 11°27'08"	27.26	S 34°29'13" W	54.24
C8	222.43	45.80	- 11°47'48"	22.98	S 34°18'53" W	45.71
C9	465.74	382.11	- 47°00'28"	202.55	N 51°11'57" E	371.48
C10	470.74	383.71	+ 46°42'13"	203.24	S 51°02'49" W	373.18

PLAT TWO - SECTION THREE
 LOTS 1 THRU 7 BLOCK D
VICTORIA'S GRANT
 EIGHTH ELECTION DISTRICT
 ST. MARY'S COUNTY, MARYLAND
 MAY, 1998

46 16

SCALE: 1" = 50'

OFFICE OF PLANNING & ZONING Date _____ Director _____ Chairman _____	ST. MARY'S COUNTY METROPOLITAN COMMISSION Director <i>J. W. Leath</i> 9/16/98	DEPARTMENT OF ENVIRONMENTAL HEALTH Date <u>10-7-98</u> Health Officer <i>Thomas Russell</i> Director, Env. Hygiene _____ Sanitarian _____	DEPARTMENT OF PUBLIC WORKS Date Approved <u>10-2-98</u> CP-9799-002 Proj 7/98 Approved Reference <i>George A. Williams</i> Drawn By: MARTIN Checked By: RBR
---	---	---	--

RDA
 REAL ESTATE DEVELOPMENT TECHNOLOGY ASSOCIATES, INC.
 ENGINEERS LAND PLANNERS LAND SURVEYORS
 14603 MAIN STREET
 UPPER MARLBORO, MARYLAND 20772
 PHONE: (301) 627-3100

MSA SSU 1252-3007-3